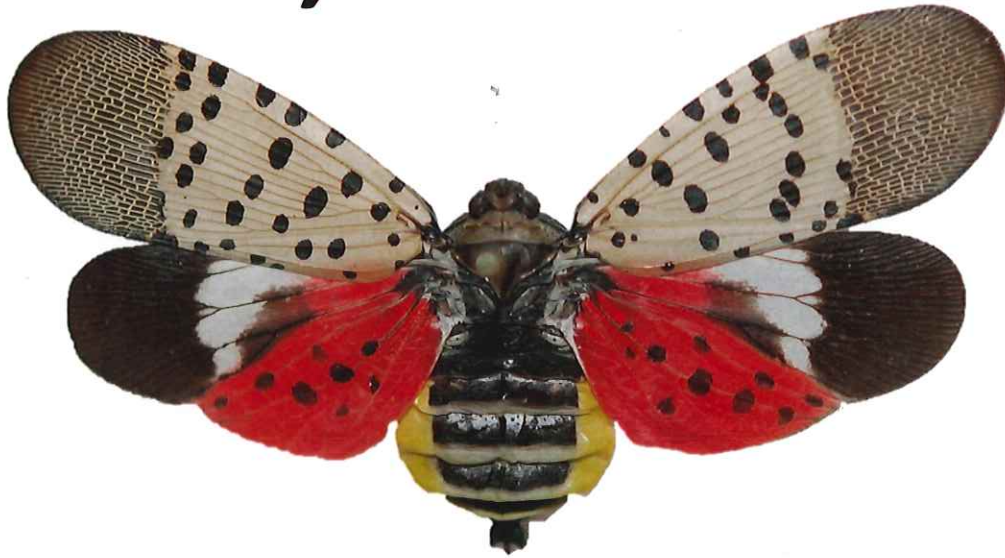


SEE IT, REPORT IT!



Spotted Lanternfly

What to do:

If you see egg masses, scrape them off, double bag and throw away.
You can also place the eggs into alcohol, bleach or hand sanitizer to kill them.

Collect a specimen:

Specimens of any life stage can be turned in to the New Jersey Department of Agriculture's lab for verification.

Take a picture:

With your GPS function turned on your smartphone or a camera with GPS, take a photograph of **ANY** life stage (including egg masses)

Submit picture to: SLF-plantindustry@ag.nj.gov

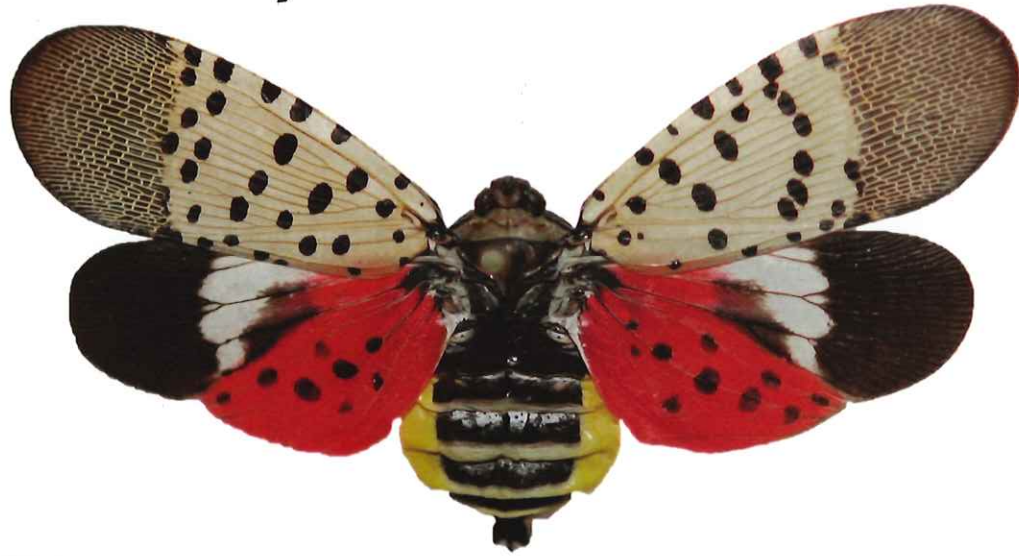
Report a site:

If you can't take a specimen or photograph, call and leave detailing your sighting and contact information

NJ Spotted Lanternfly Hotline at 1-833-223-2840 (BADBUG0)



SI LO VE, REPORTERELO!



Mosca Linterna con Manchas

Qué hacer:

Si ve masas de huevos, les Raspe, doble bolsa y tire a la basura.

También puede colocar los huevos en alcohol, blanqueador o desinfectante para matarlos.

Recoger a una muestra:

Muestras de cualquier etapa de la vida pueden girar al laboratorio del Departamento de agricultura de Nueva Jersey para su verificación.

Tomar una foto:

Con su función GPS en su smartphone o una cámara con GPS, tomar una fotografía de cualquier etapa de la vida (incluyendo masas de huevos)

Informe de un sitio:

Si usted no puede tomar una muestra o fotografía, llamar a dejar detalles de su avistamiento y contacto information.

El teléfono en Nueva Jersey para reportar la mosca linterna con manchas es 1-833-223-2840

Enviar foto a: reportspottedlanternflynj@ag.nj.gov

Para más information visite https://www.nj.gov/agricultura/divisiones/pi/rpy/spotted_lanternfly.html



Spotted Lanternfly - See the Signs



Nymph Stage

1st instar - April to June
 2nd & 3rd - June to July
 4th instar - July to Sept (red)



Adult Stage

July – December



Egg Masses

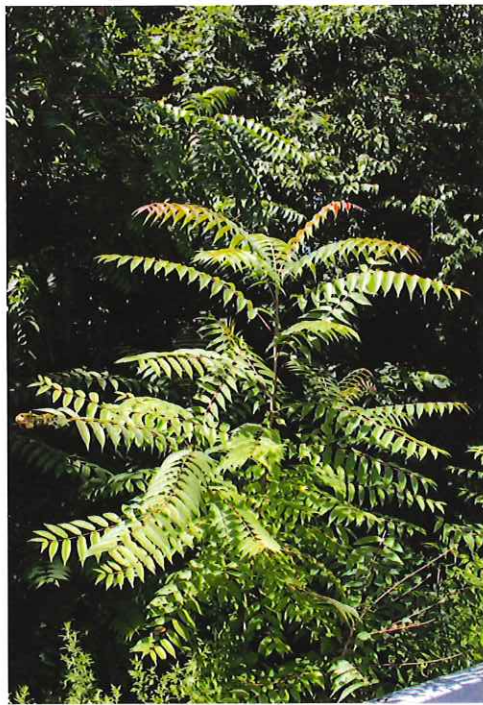
September to April
 (unhatched)



Staghorn Sumac

Rhus typhina

- Toothed leaf edge
- Upright red, fuzzy fruit
- Twigs are fuzzy
- Smooth bark
- Horizontal lenticels on bark
- Grows in clonal colonies



Tree of Heaven

Ailanthus altissima

- Primary host
- Smooth leaf edge
- 1-2 teeth at leaf base
- Strong odor (burnt peanut butter)
- V or heart-shaped leaf scar
- No terminal bud
- Papery seed
- Light gray/brown bark
- cantaloupe bark pattern



Black Walnut

Juglans nigra

- Toothed leaf edge
- Large round fruit
- "Monkey-faced" leaf scar
- Chambered dark pith
- dark, rough diamond pattern bark

2019 SLF Pesticide Recommendations for Homeowners

Active ingredient	Mode of exposure	Available products	Legal use	Activity against SLF	Residual activity
bifenthrin	contact	Talstar P	Ornamental and landscape plants and trees	Excellent	Excellent
carbaryl	contact	Garden Tech Sevin Ready-to-Spray Bug Killer (note: new formulation is sold with the active ingredient zetacypermethrin)	Vegetable and ornamental plants and trees under 10 ft tall	Excellent	Good
dinotefuran	systemic/contact	Safari, Transtect	Ornamental and landscape plants and trees	Excellent	Excellent
malathion	contact	Spectracide Malathion Insect Spray	For use on flowers and bushes, fruit, and vegetables	Excellent	Poor
Neem oil*	contact	Bonide Neem Oil	Flowers, ornamental trees and shrubs, fruit, nuts and vegetables.	Good	Poor
Natural pyrethrins	contact	Garden Safe MultiPurpose Garden Insect Killer, Natria Insect Mite and Disease Control	Vegetables, ornamentals, trees, shrubs and flowers	Good	Poor
Insecticidal soaps*	contact	Garden Safe Insecticidal Soap	Vegetables, fruit trees, ornamentals, shrubs. flowers and gardens.	Good	Poor
spinosad*	systemic	Bonide Captain Jack's Deadbug Brew	Outdoor ornamentals, fruit and vegetables.	Good	Poor
tau fluvalinate, tebuconazole	contact/systemic	BioAdvance 3 in 1, Insect, Disease and Mite control	Non-edible plants only, ground covers, vines, ornamentals, shrubs and trees	Excellent	Good
Zetacypermethrin	contact	Amdro Quick Kill Outdoor Insect Killer Concentrate	Lawns, trees and shrubs, roses and flowers.	Excellent	Excellent